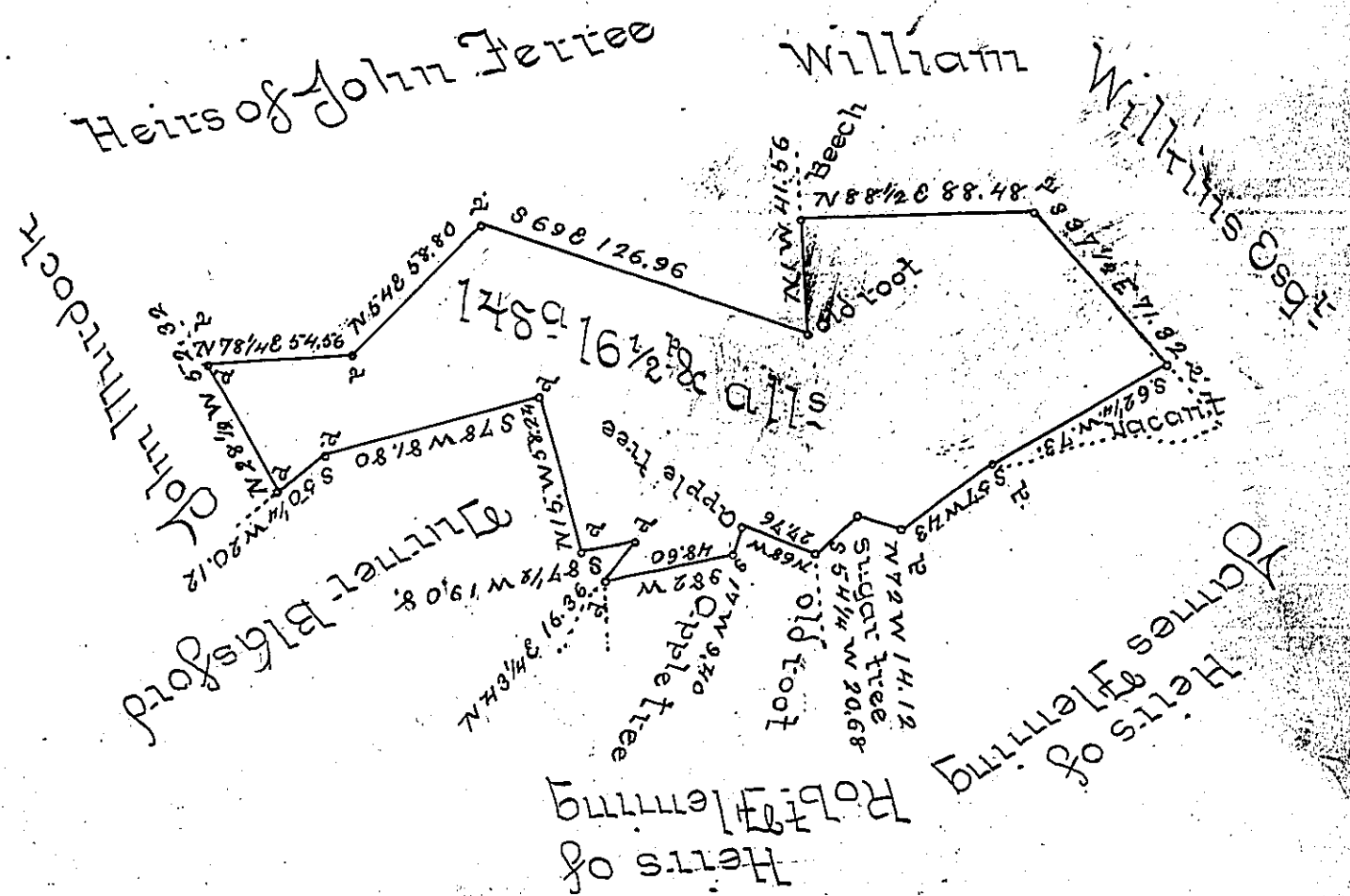


Courses and distances Beginning at the Beech corner of William Wilkins Esq.

- N 88 1/2 E 22.12 Chains
- S 37 1/2 E 17.83
- S 62 1/4 W 18.25
- S 57 W 10.75
- N 72 W 3.53
- S 54 1/4 W 5.17
- N 68 W 6.97
- S 17 W 2.35
- S 82 W 12.15
- N 63 1/4 E 7.09
- S 87 1/2 W 7.77
- N 15 W 14.56
- S 78 W 20.75
- S 50 1/4 W 5.03
- N 28 1/2 W 13.03
- N 78 1/4 E 13.67
- N 54 E 14.70
- S 69 E 31.77
- N 1 W 10.39



Surveyed the above described Land (in pursuance of a Warrant granted to David Irwin bearing date the 17th day of July A.D. 1841) Containing one hundred and forty eight acres sixteen and one half perches, and allowance of six per cent situate in Peebles Township Allegheny County,

Surveyed Aug 25 1841 by  
James C. Gibson D.S.

To Jacob Sallade Esq }  
Surveyor General }

IN TESTIMONY that the above is a copy of the original remaining on file in the Department of Internal Affairs of Pennsylvania, made conformably to an Act of Assembly approved the 16th day of February, 1833, I have hereunto set my Hand and caused the Seal of said Department to be affixed at Harrisburg,

this first day of August 1899

*James W. Price*  
Secretary of Internal Affairs.